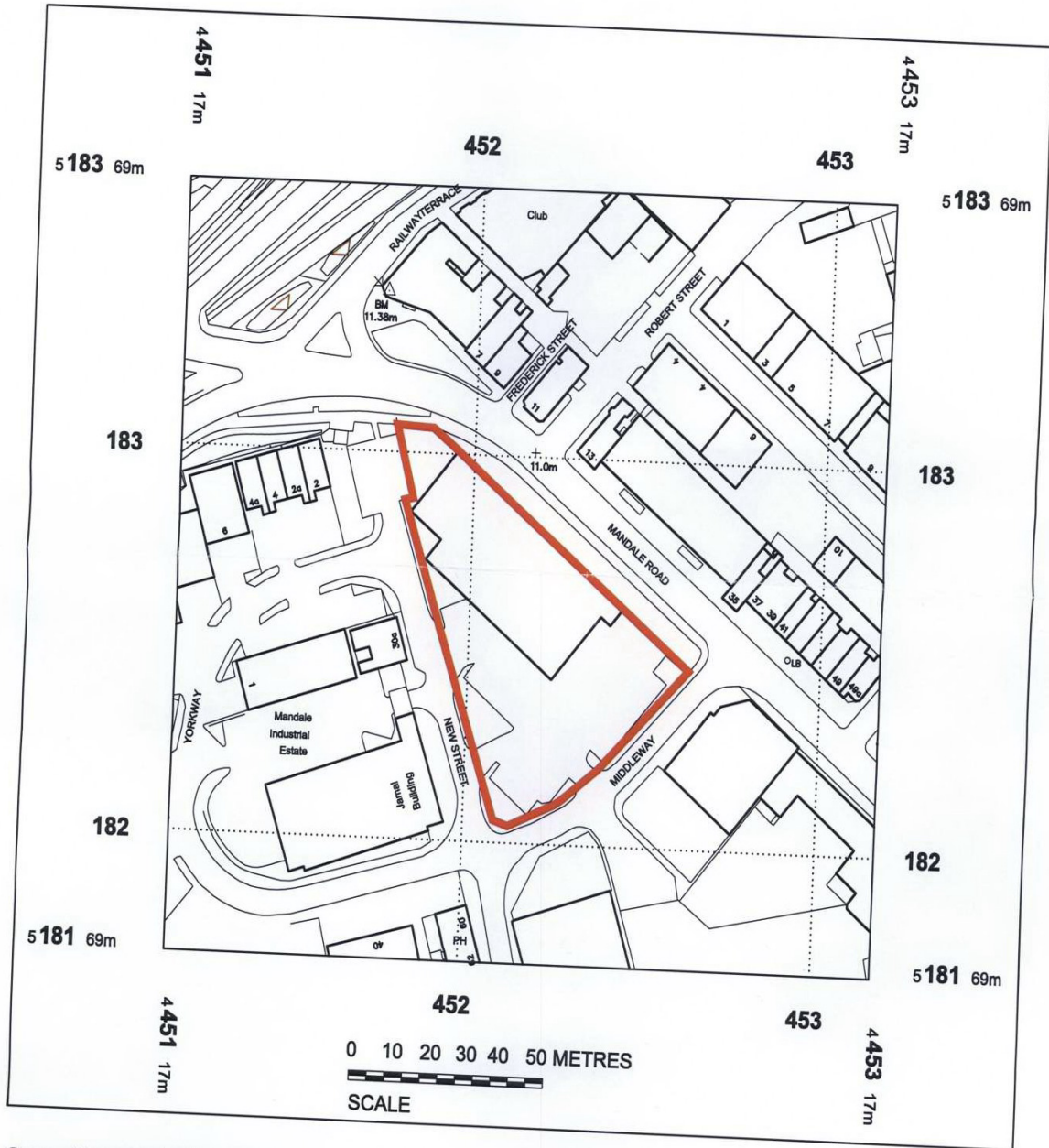


Ordnance Survey Superplan Data



08 / 1184 / --

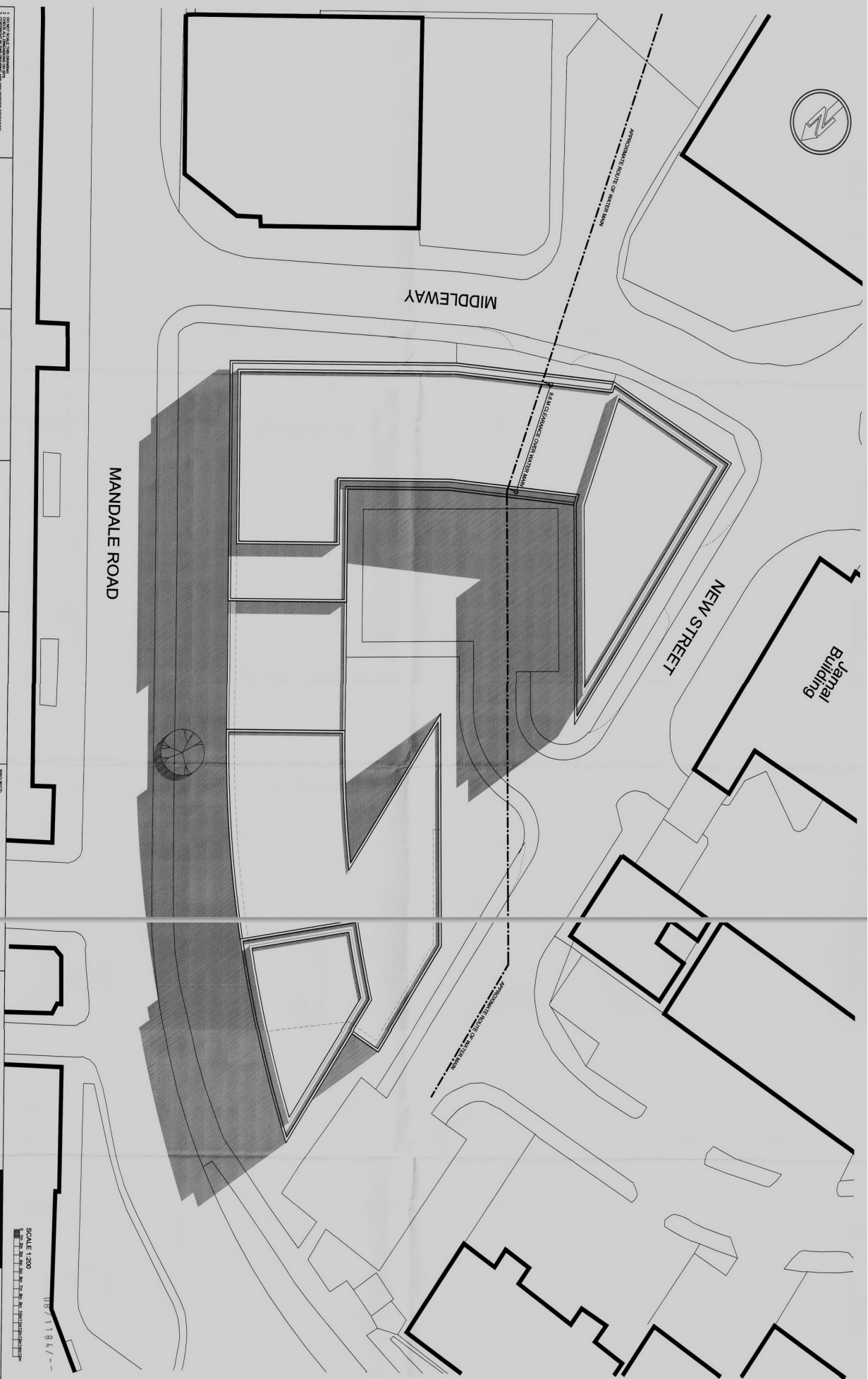
Crown Copyright 2006 - Scale: 1/1250

Reproduction in whole or in part is prohibited
without the prior permission of Ordnance Survey. SBC 0001

STOCKTON BOROUGH COUNCIL
PLANNING
13 MAY 2008
DATE RECEIVED



620/L100 PROPOSED SITE PLAN



1. CONFORM TO THE CITY OF ELDER RESTER ZONING ORDINANCES AND THE CITY OF ELDER RESTER SUBDIVISION ORDINANCES.

1	2	3	4	5	6
REVISION	REVISION	REVISION	REVISION	REVISION	REVISION
A-100	B-100	C-100	D-100	E-100	F-100

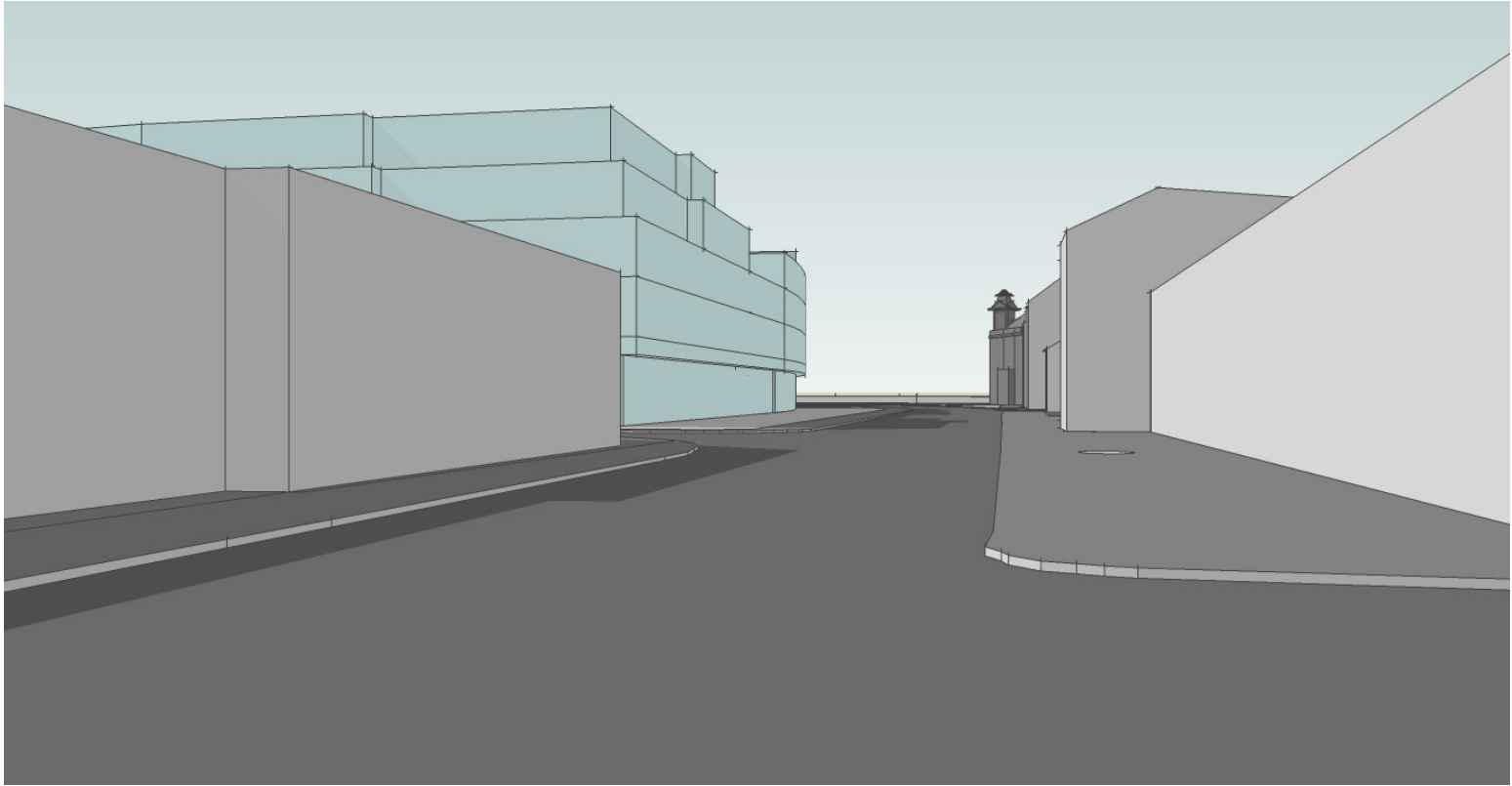
PROJECT:
 PROPOSED STUDENT/COMMERCIAL
 DEVELOPMENT
 FOR SUPREME PROPERTIES

DRAWING:
 PROPOSED SITE PLAN
 (PLANNING)

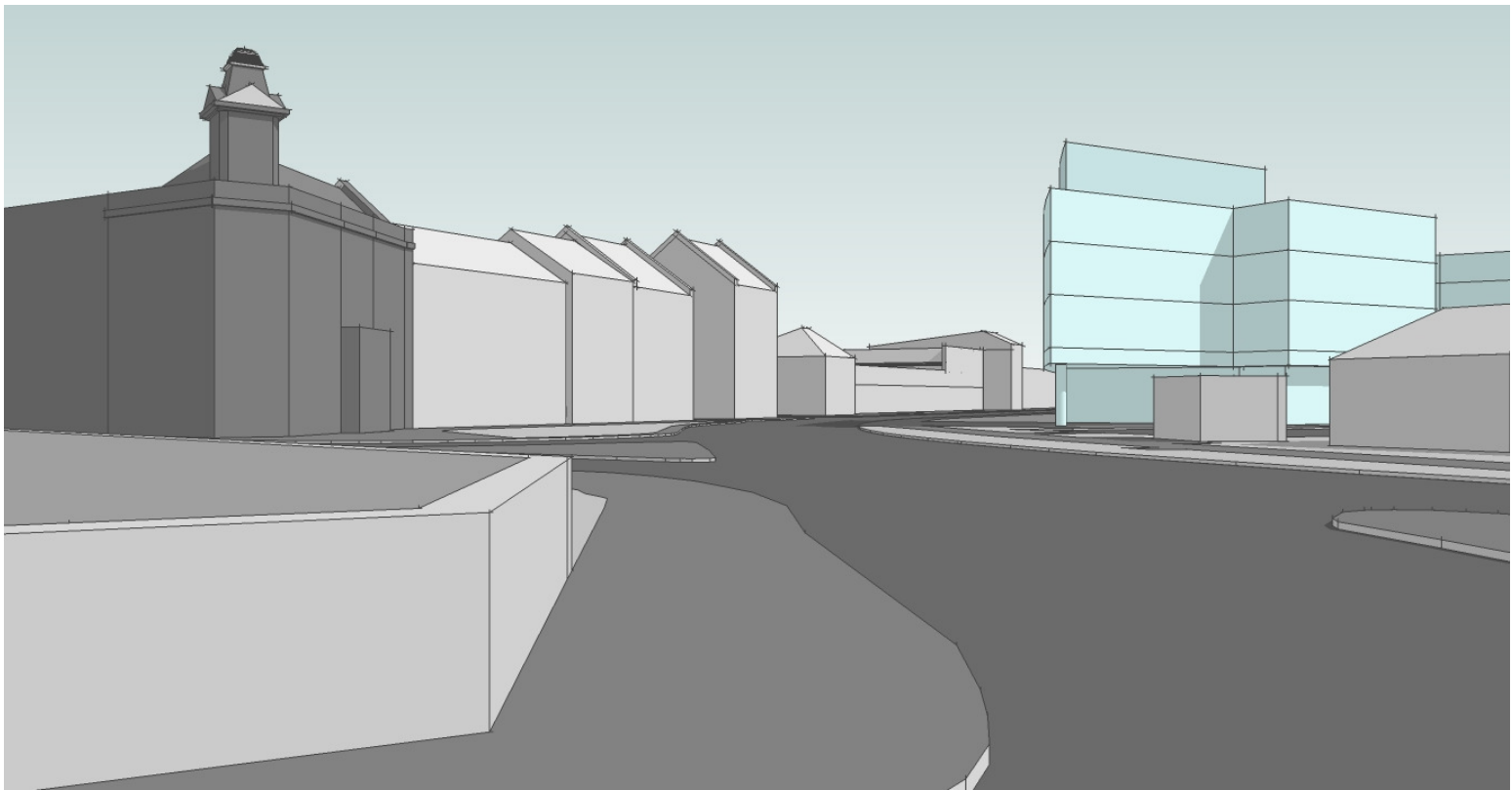
SCALE: 1/8" = 1'-0"

ELDER RESTER
 CITY OF ELDER RESTER
 DRAWING NO. 0620/L100

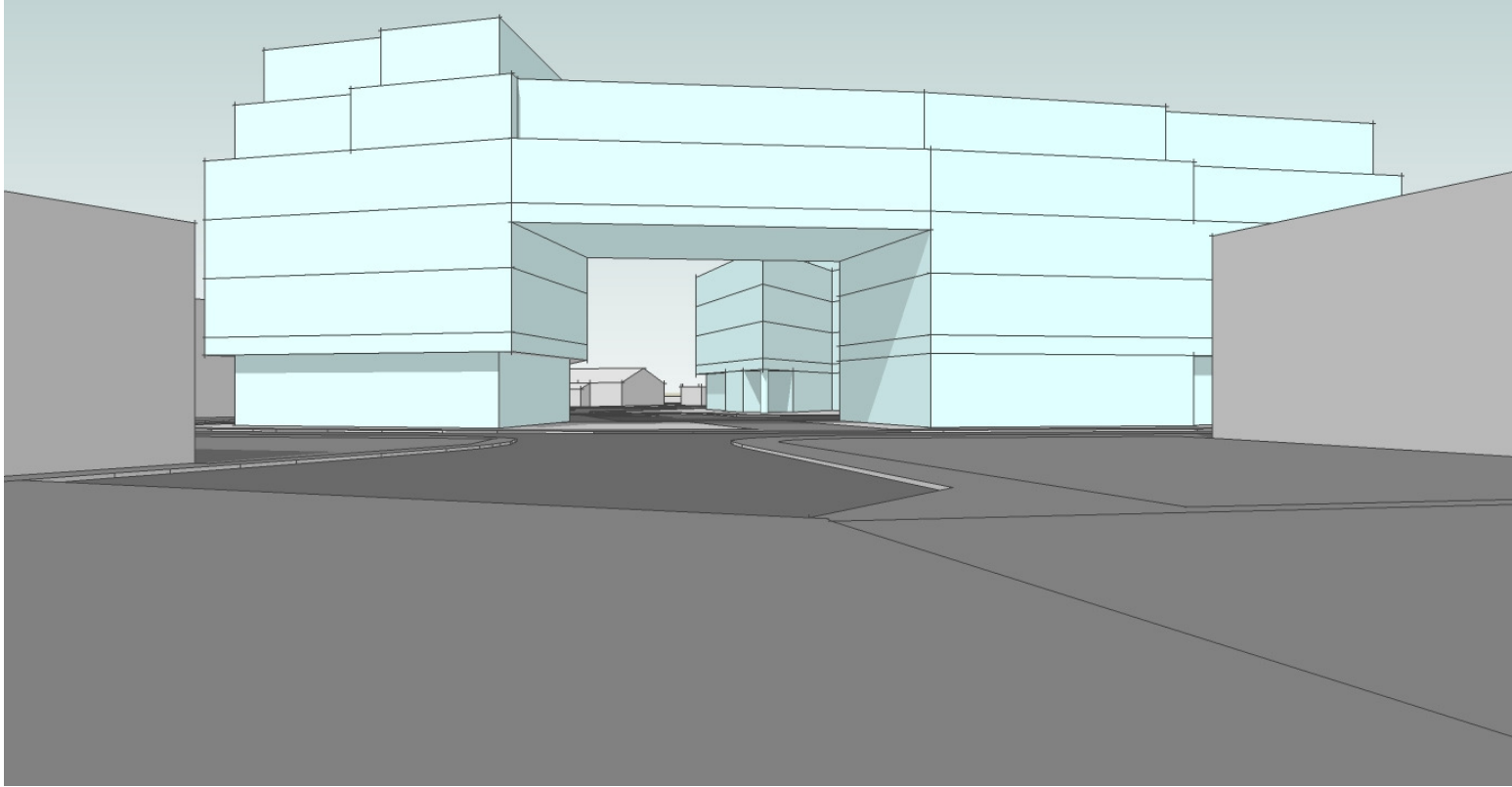
DATE RECEIVED
 05 SEP 2008
 10:45 AM



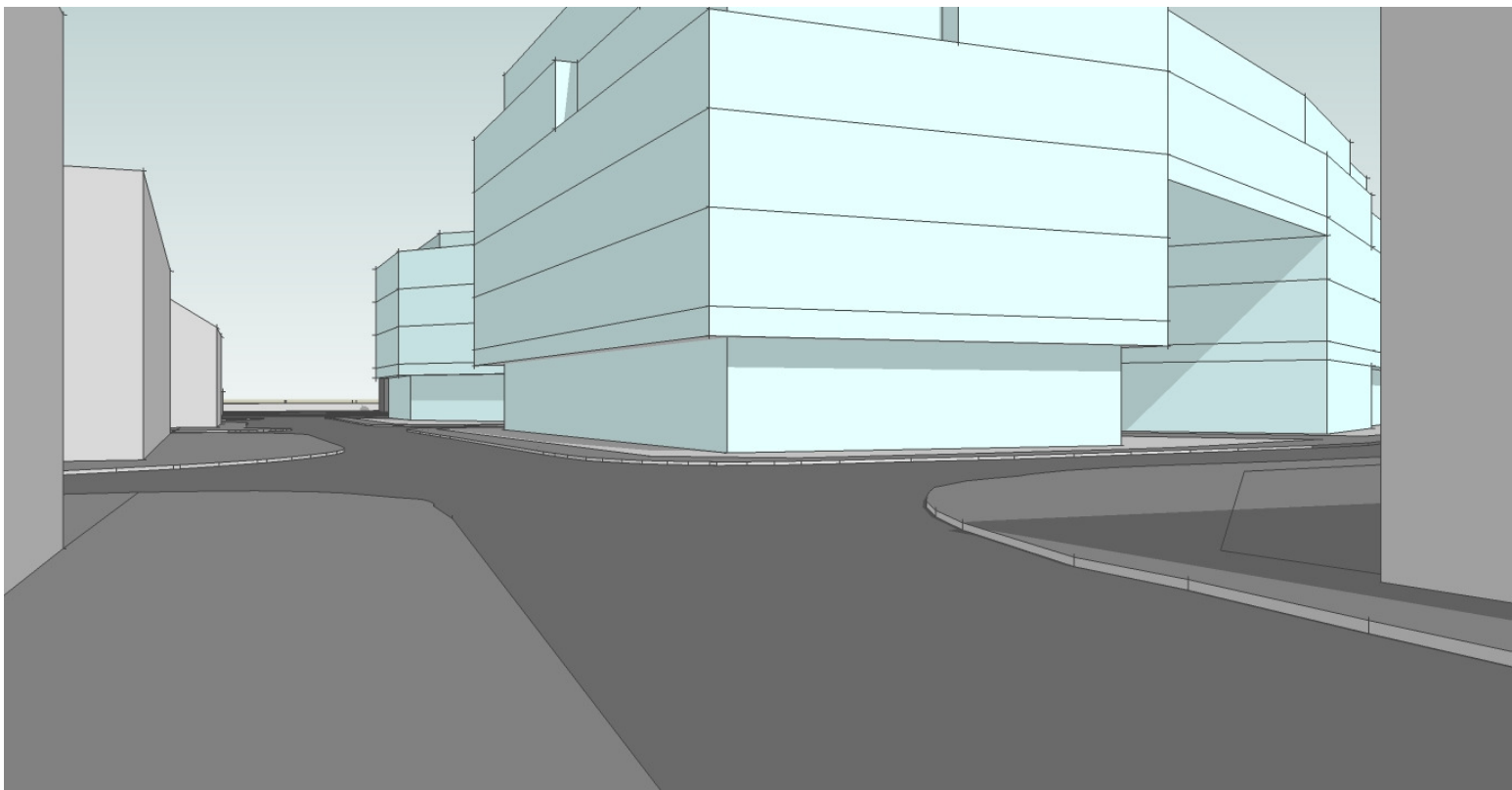
Scale and massing drawings - View from Archer Street



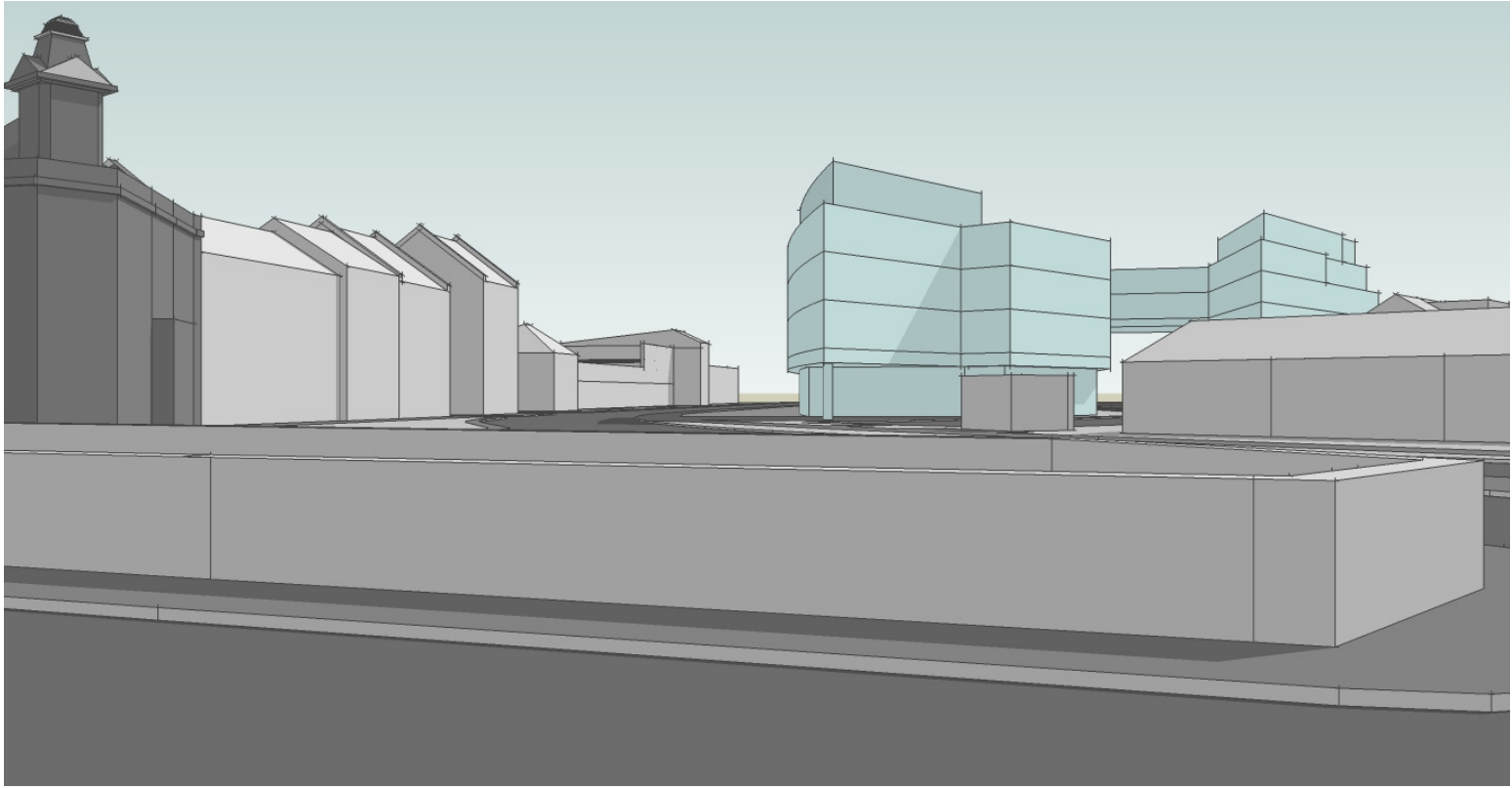
Scale and massing drawings - View from Mandale Road



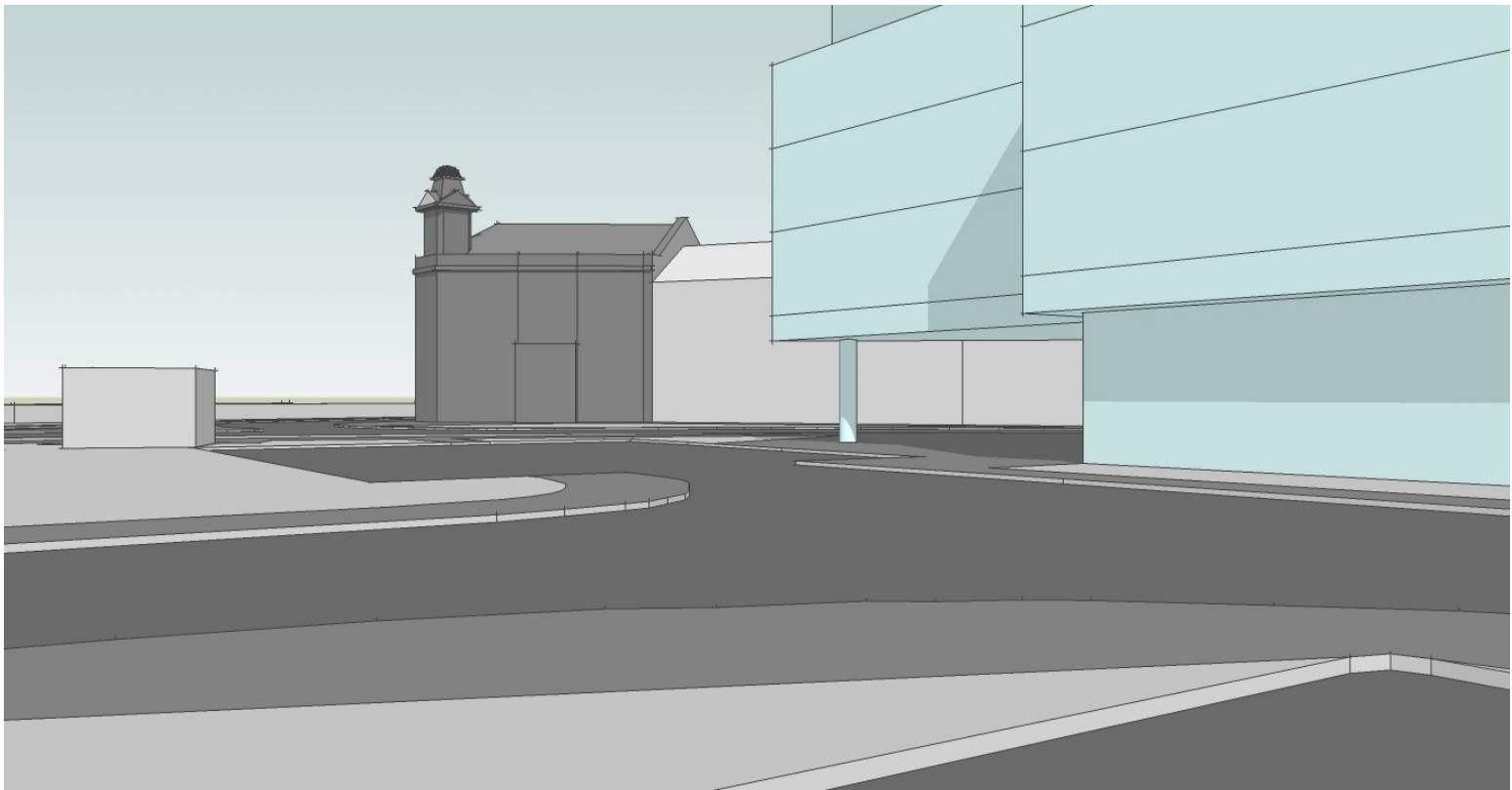
Scale and massing drawings - View from Middleway



Scale and massing drawings - View from New Street



Scale and massing drawings - View from Railway Terrace



Scale and massing drawings - View from Yorkway